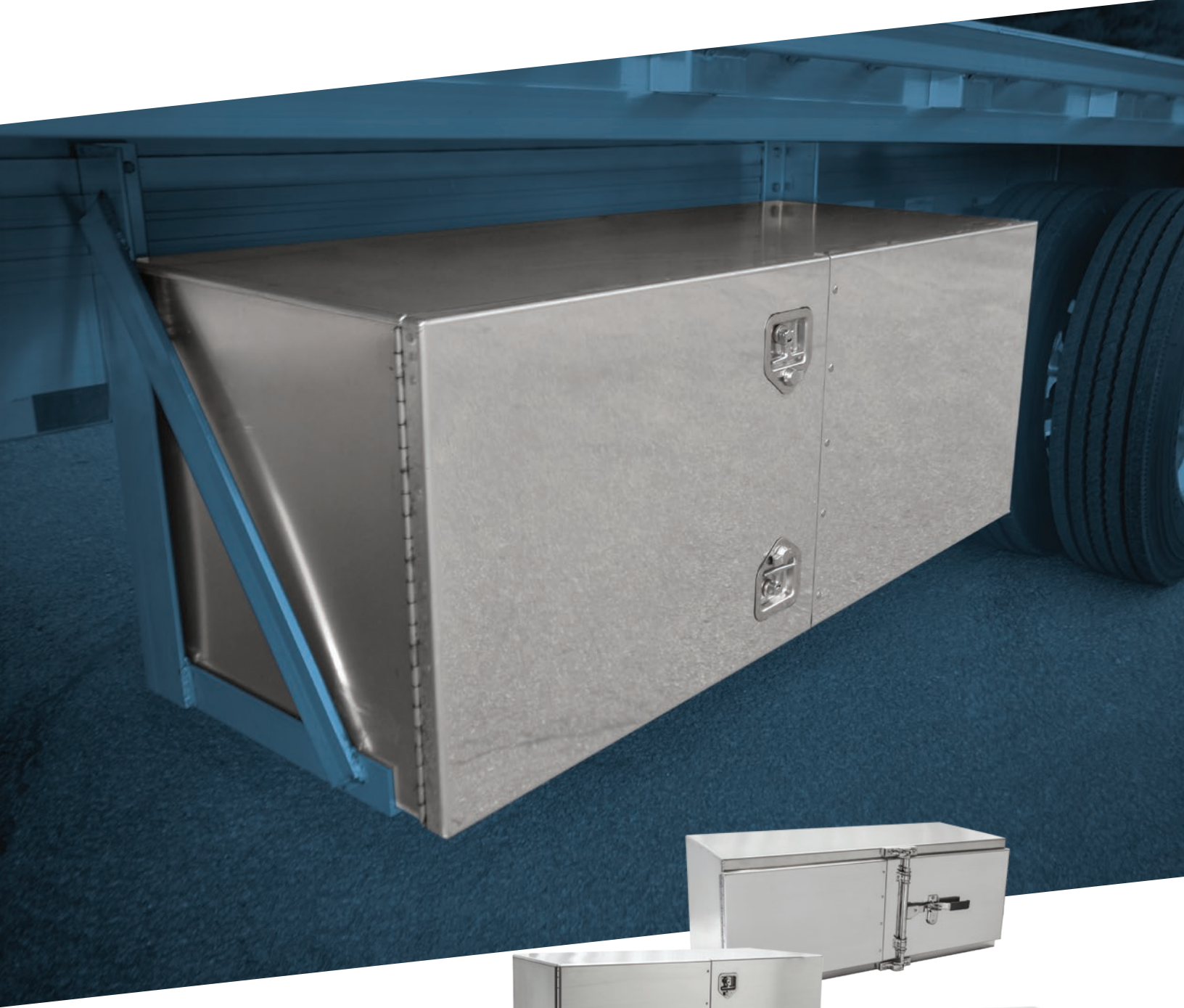


Undermount Boxes





LOOKS GOOD AND WEARS TOUGH

AeroBoxes stand tough through the harshest weather and road conditions. With several models to choose from, our boxes are built to last. Known for premium design and quality workmanship, Aero is the industry leading manufacturer of flatbed and drop deck trailer toolboxes.



AB100 | STANDARD T-HANDLE

Rugged T-handle locks

External radius door seal

Stainless steel piano hinge

Continuous full-length for strength and security

Single and double door

Standard polished aluminum

Optional Treadbrite aluminum or polished stainless steel doors



AB150 | STANDARD CAM LOCK

High quality stainless steel cam lock

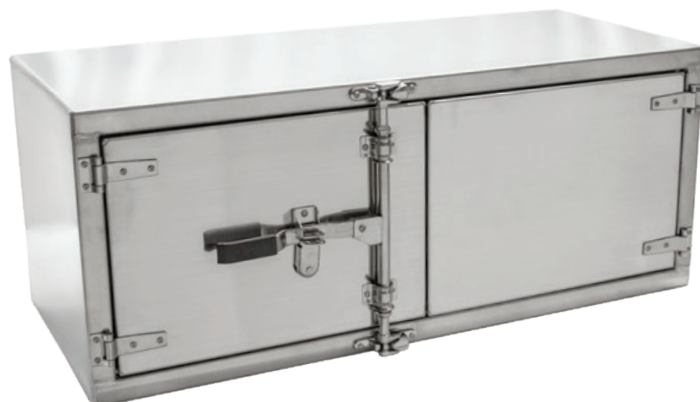
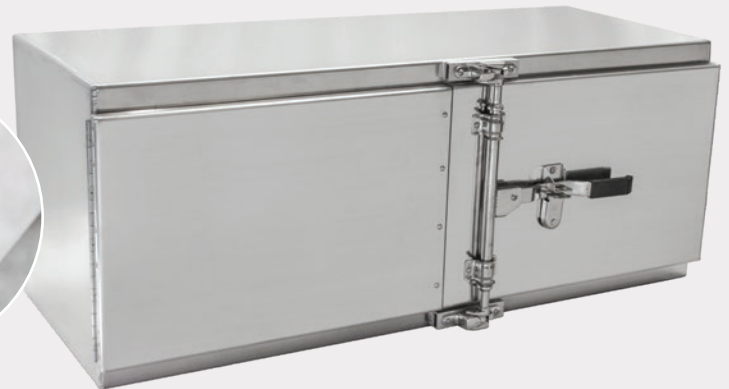
External radius door seal

Stainless steel piano hinge

Continuous full-length for strength and security

Polished aluminum double door

Optional polished stainless steel



AB250 | EXTREME CAM LOCK

High quality stainless steel cam lock

Internal door seal

Stainless steel strap hinges

Polished aluminum double door

Optional polished stainless steel



T-HANDLE LOCK

Toughest stainless steel lock in the industry



CAM LOCK

Made of high quality stainless steel and allows for use of a personal padlock

Will not corrode or seize up



PIANO HINGE DESIGN

Stainless steel construction

Continuous full-length for better strength and security

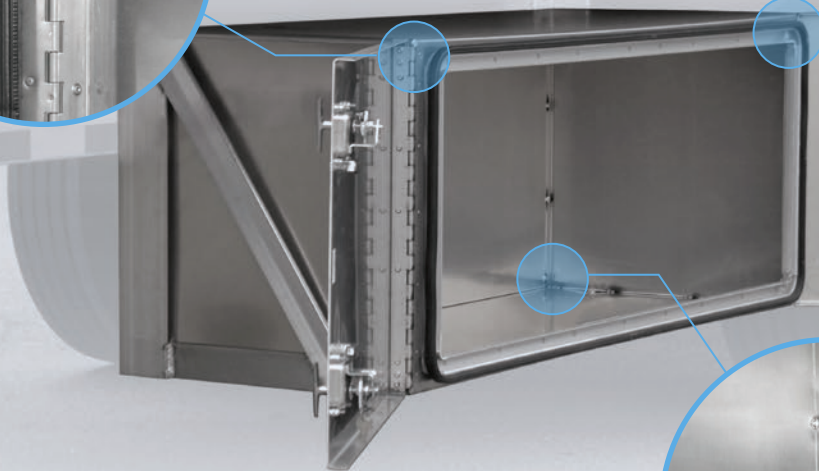
Hidden for streamlined appearance



INDUSTRY'S BEST EXTERNAL RADIUS DOOR SEAL

Radius corner casting prevents gasket seal from tearing and keeps the weather out

Internal door seal on AB250



FLANGE END PLATES

All four edges have machine bent flanges for added strength and durability

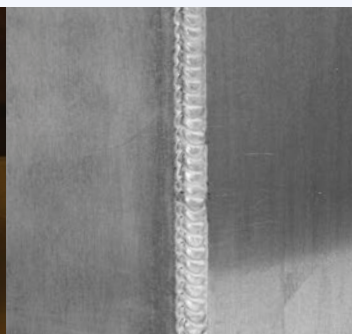


Custom sizes and models available

Multiple mounting bracket kit options

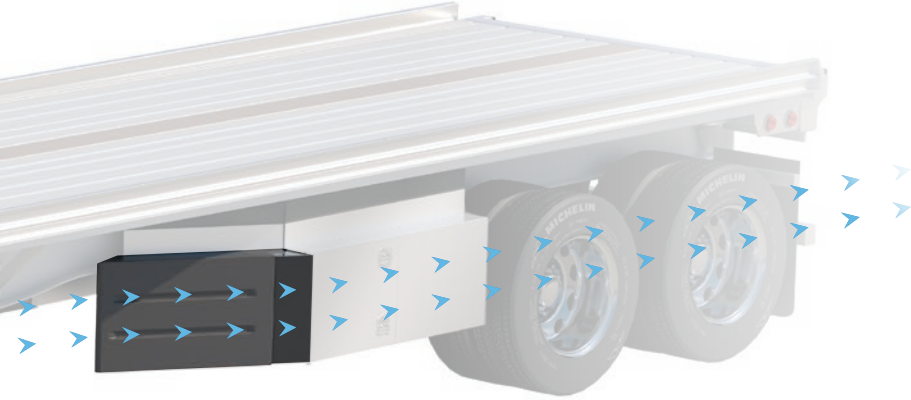
ROBOTIC WELDS

Create consistent strength and appearance





Flatbed Family of Products



AERO FAIRING™

Our Aero Fairing was designed to seamlessly integrate with any underbody tool box—including our durable AeroBoxes—providing increased fuel savings for your flatbed trailer.

United States Patent 9815506



AERO CONESTOGA®

Aero's history as a leader in the industry includes the introduction of the first rolling tarp system. Over 30 years of continued research and development has ensured that the Conestoga remains the best rolling tarp system on the market. Models available for flatbeds, drop decks and straight trucks.

SIDE KITS

Aero's Side Kits are the strongest and lightest you can buy, with every component engineered for the job it's intended to do. If you have a load to haul, Aero has a Side Kit to keep the weather out and your load safe.



AERO BULKHEAD

Industry's leading DOT bulkhead is available in 10" and 22" wrap models. Aero makes a complete line of good-looking, hard-working bulkheads to fit your needs.

Copyright © 2020 Aero Industries, Inc. Aero, the chevron, and Conestoga are registered trademarks of Aero Industries. AeroBox and AeroFairing are trademarks of Aero Industries. All rights reserved.

Aerodynamic Patents / US: 7854468, 8177287, 8845007, 9682734, 9815506, 9873466, 9937964, 10214254; Canada: 2789819, 2888365; Conestoga Patents / US: 4711484, 4902064, 5538313, 6419301, 6793273, 7229120, 7249796, 7325855, 7494177; others pending; Canada: 1290786, 2159749, 2610565, 2625980, 2888365; others pending; Side Kit Patents / US: 3692354, 4067601

INDIANAPOLIS, IN
800.535.9545

OMAHA, NE
800.535.8552

KENT, OH
888.237.2262

aeroindustries.com