



PNEUMATIC TRAILERS

AEROMAC 1615



SPECIFICATIONS

Vessel

- **Construction** - Monocoque frameless design, clean bore smooth interior with external rings, front and rear void section.
- **Internal Treatment** - Food grade.
- **Specifications** - Maximum product temperature 185 deg. Maximum operating pressure 14.7 PSI /22.5 PSI Test pressure.
- **Vessel Construction** - 0.190" Aluminum 5454-H32.
- **Vessel Finish** - Polished vessel, end cones and hoppers.
- **Hoppers** - 45 deg. hopper slopes with weld-on lower cones.
- **Manholes** - Two (2), 20" manholes with aluminum cams and nylon wear plates located above front hopper and rear hopper.
- **Optional Washout Nipples** - Two (2), 6" nipples with adapter and dust cap located adjacent to front and rear girth seams.

- **Air Inlet** - 3" line with adapter and dust cap located street side above front fender with two BTI Optima check valves.
- **Aeration** - BTI SpinFlo aerators with food grade rubber cones and clear housings. White food grade hoses connecting to manifold.
- **Aeration Control** - 3" master control butterfly valve/2" individual hopper control butterfly valves with stainless disc and white seats.
- **Pressure Control** - 3" butterfly valve with stainless disc and white seat located street side behind front fender.
- **Blowdown** - 3" aluminum line exhausting to the curbside; 3" butterfly control valve with stainless disc and white seat.

Gauges

- **Tank and Line Gauges** - Two liquid fill 0-30PSI gauges located in illuminated aluminum box forward of tandem.

E X P E R I E N C E E X C E L L E N C E

Accessories

- **Ladder** - Aluminum ladder located at rear with top platform landing and lower assist step.
- **Walkway** - Adhesive backed tape walkway between toe rails with aggressive tread walkway and extended handrails covering rear transition.
- **Hose Tube** - One (1) hose tube with rear door located curbside.
- **Fenders** - Aluminum single contour front and double contour rear fenders with anti-spray mud flaps.
- **Upper Coupler** - Adjustable galvanized upper coupler.
- **Integral Front and Rear Frames** - Integral aluminum frames.
- **Landing Gear** - No maintenance Jost Aluminum landing gear.
- **Suspension** - Hendrickson AANT23, 77.5" track straight parallel spindle axles, AA250 air bags, galvanized frame brackets and black soft coat painted axle and trailing arms, single leveling valve and integrated dump valve.

Piping / Fittings

- **Top Air** - 3" aluminum line with 3" butterfly control valve with stainless disc and white seat located street side above front fender.
- **Product Valve** - 5" butterfly valve with stainless steel disc and white seat; 14" valve handle extensions.

- **Product Tee** - 5" x 4" BTI SiphonFlow straight aluminum tee.
- **Product Line** - 4" Sch. 40 aluminum product line manifold connected to product tees with groove by smooth cam-on couplings.
- **Optional Front Cleanout** - 4" cast aluminum cleanout with 4" adapter and dust cap located forward of first product tee.
- **Discharge Line** - 4" aluminum bent tube under axle discharge with 4" weld-on adapter and dust cap.

Chassis

- **Optional Load Gauge** - Air-Weigh LoadMaxx digital onboard scale located street side above rear fender.
- **Anti-Lock Brakes** - Meritor WABCO 4S-2M ABS with Roll Stability.
- **Wheels** - Aluminum 22.5 x 14.00 polished.
- **Tires** - Michelin X-1 Multi Energy super singles.

Lights

- **Lights** - 10-year warranted grommet mounted LED lights and plug'n'play harness with aluminum three lamp light boxes.

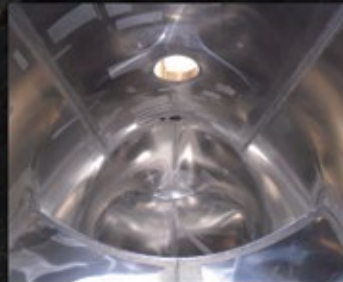
Paint

- Black soft coat painted axles and black urethane painted landing gear.

FEATURES



Light Weight Frameless Design



100% Clean Bore Interior



Transition Walkway with Handrails



102" Wide Low Center of Gravity



Food Grade Aerators and Hoses



Wiring and Airline Accessibility



Galvanized Suspension Hangers and Soft Coat Axles

Scan Code to



Visit our Website

Follow Us!



1-800-795-8454
www.MACTrailer.com

